

AUTODESK® CIVIL 3D

Dynamic 3D Computer-aided Design with Autodesk Civil 3D

Training Course for:
Autodesk® Civil 3D™ 2007



Lecture 3 – Supplementary Notes Create Surface by Drawing

August 2006

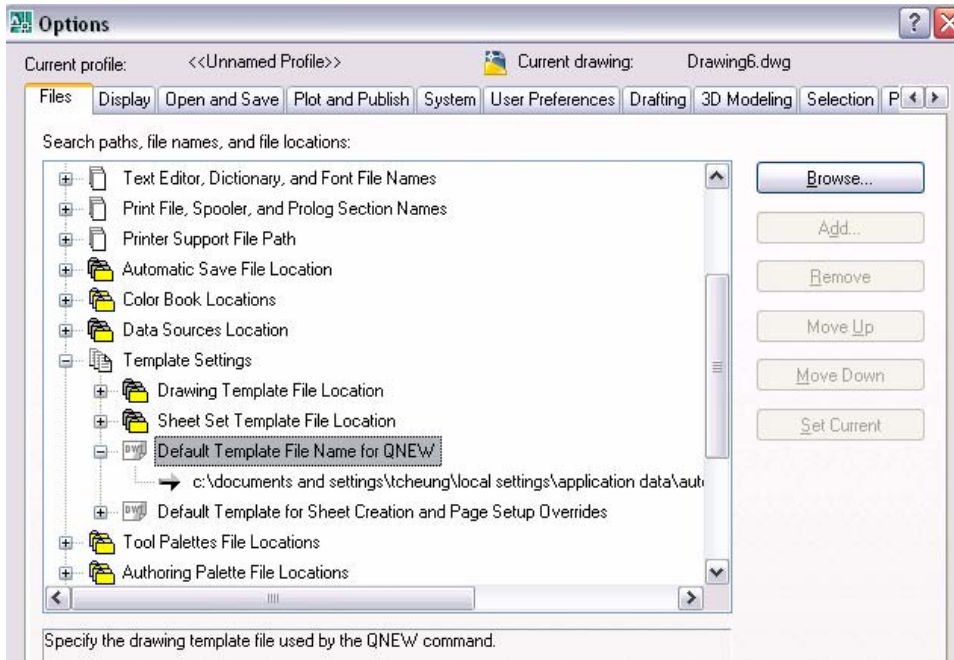
Autodesk®

Objective

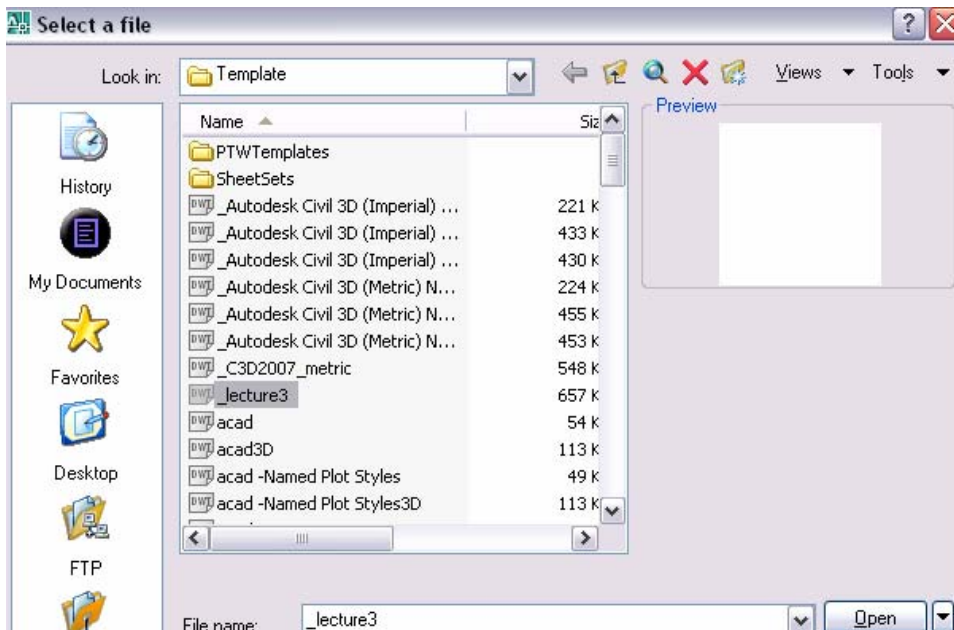
This document describes the steps to create Surface by drawing in Civil 3D.

Exercise

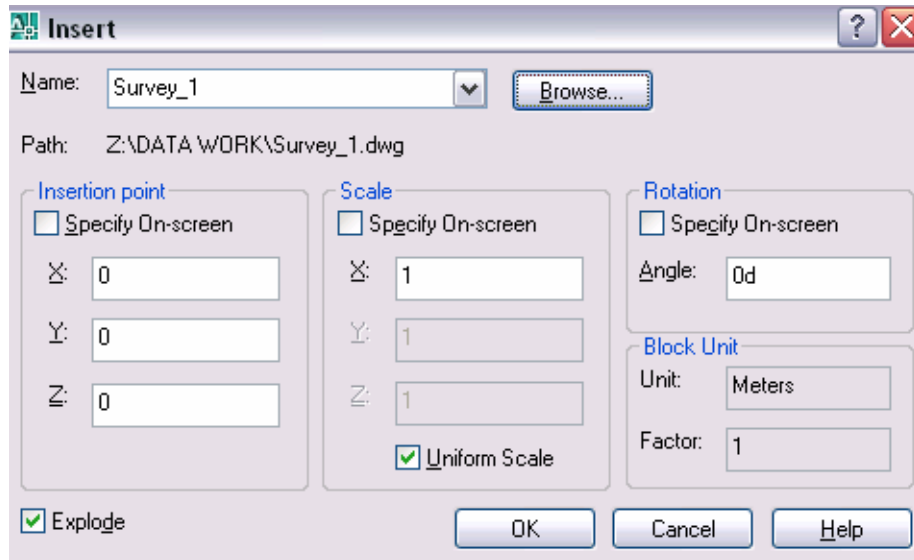
1. First, open the Civil 3D
2. Enter the 「Options」,Expand the 「Template Setting」→「Default the Template File name for QNEW」



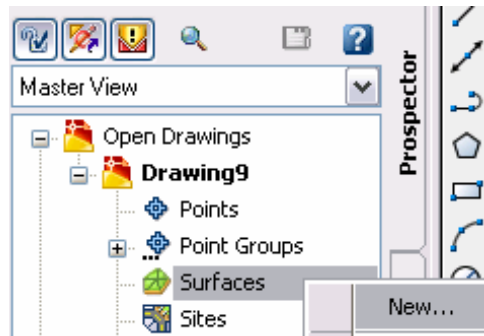
3. Click the [Browse],select the [_lecture3.dwt] open, press[OK] and close the file



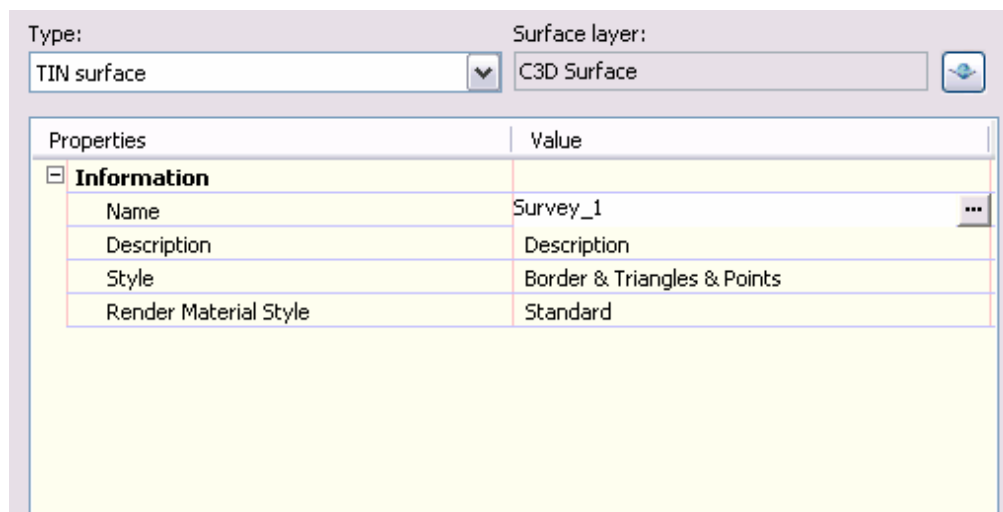
4. Create the New drawing
5. Enter [insert],Browse the [Survey_1],click on the Explode and press [OK]



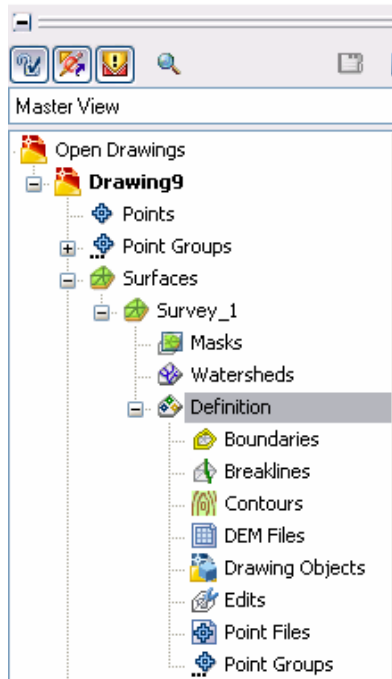
6. In the Prospector, select 「Surface」 ,right click 「New」



7. Enter the name [Survey_1], press [OK]

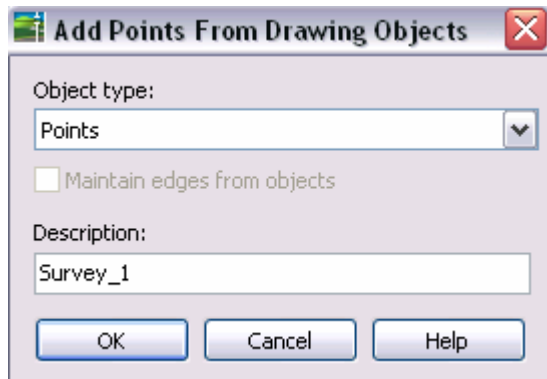


8. Expand the 「Surface」 → 「Survey_1」 → 「Definition」

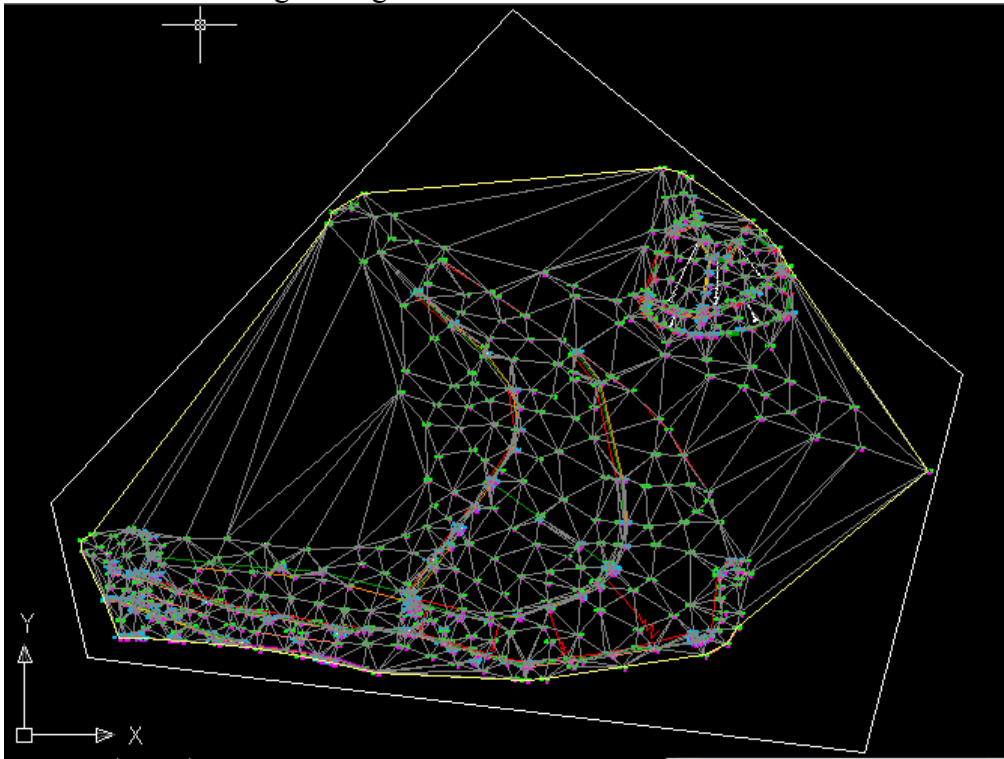


9. Select 「Drawing Objects」 → right click 「Add」

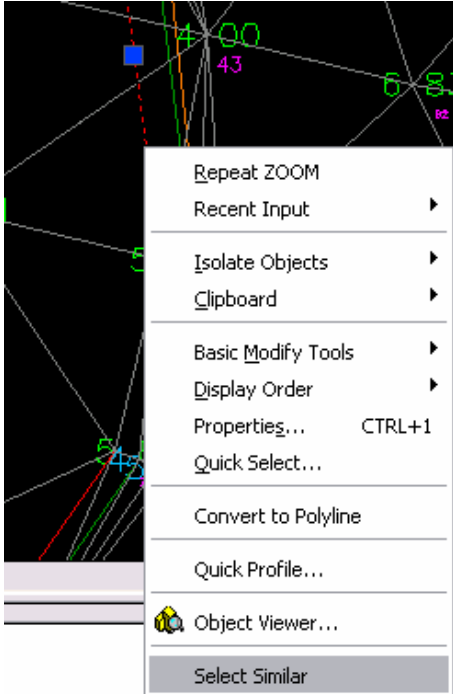
10. In the 「Add Points From Drawing」 dialog box :-
Expand the 「Object type」 select [Points]
Enter Description [Survey_1]
Press [OK]



11. Select the drawing and right click



12. Zoom the drawing, select the red line and right click [Select Similar]



13. Select the 「 Breakline 」 → right click 「 Add 」

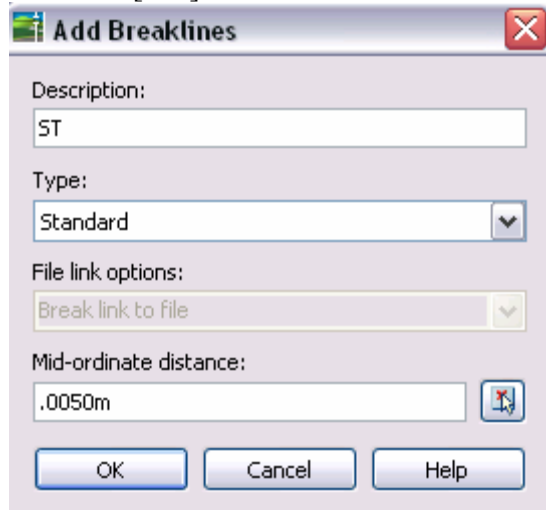
14. In the 「 Add Breaklines 」 dialog box :-

Enter description [ST]

Type select [Standard]

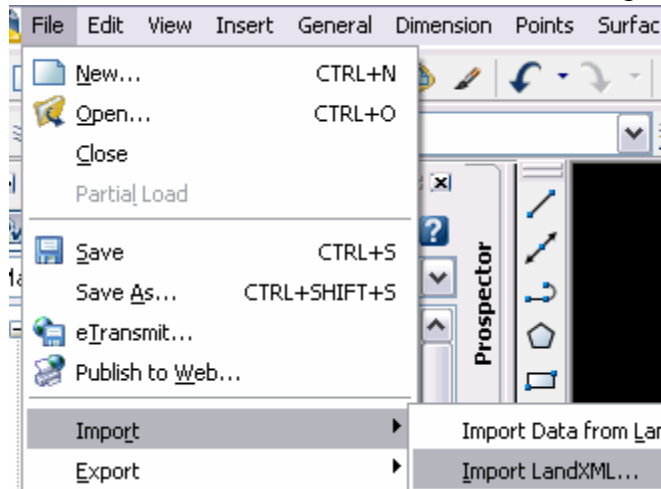
Set Mid-ordinate distance [1.000m]

Press [OK]

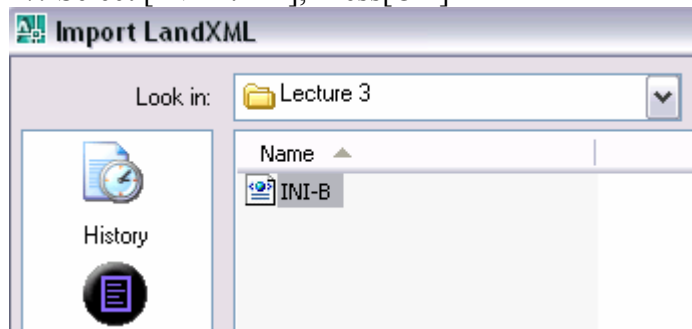


15. Return step [12 & 14] to build [SB]

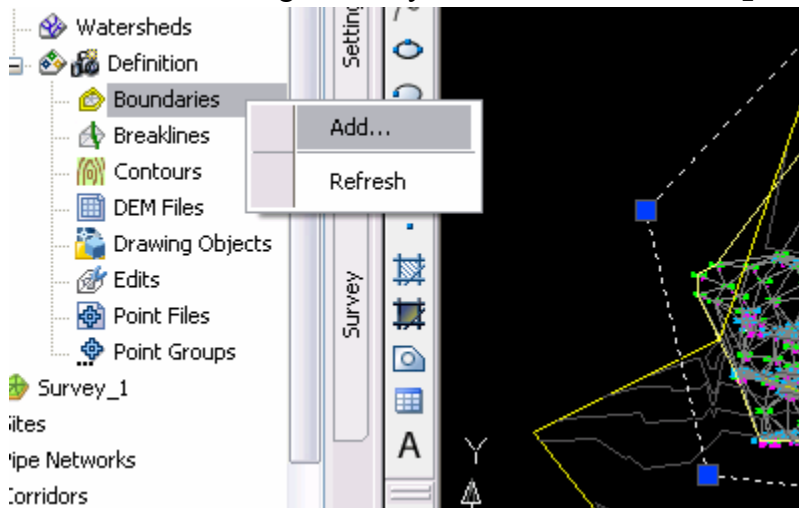
16. On the Menu toolbar, select 「 File 」 → 「 Import 」 → 「 Import LandXML 」



17. Select [INI-B.xml], Press[OK]

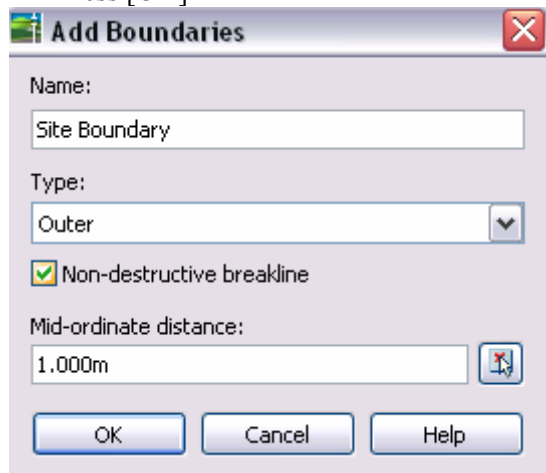


18. Select the drawing boundary and select 「Boundaries」 →right click 「Add」

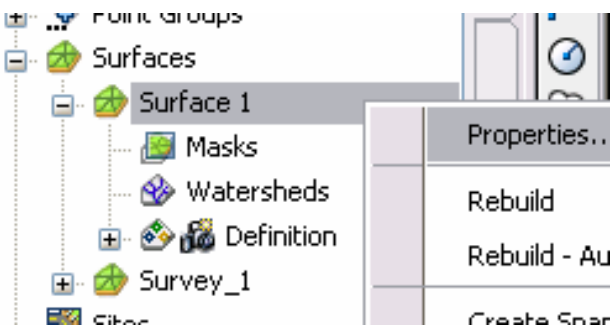


19. In the Add Boundaries dialog box :-

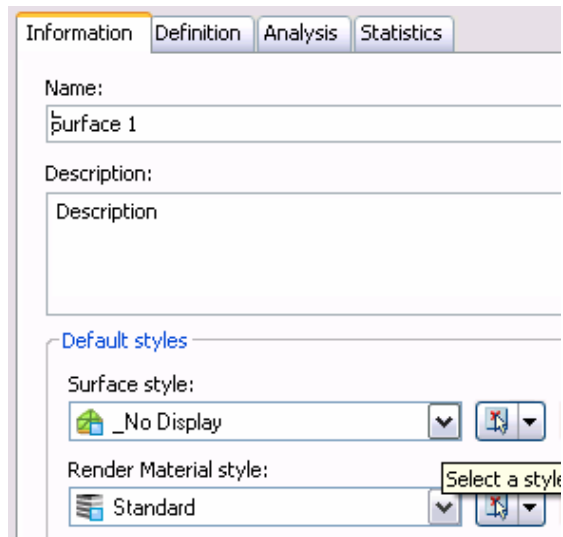
- Enter name [Site Boundary]
- Select type [Outer]
- Click on the [Non-destructive]
- Press [OK]



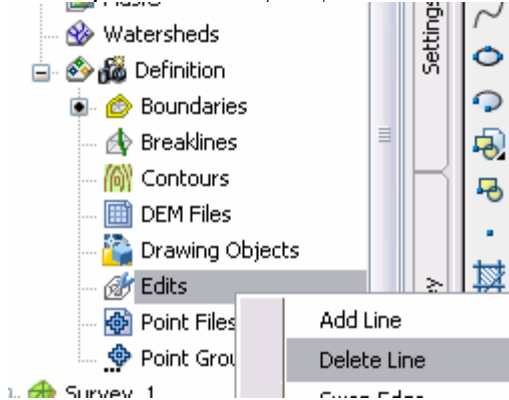
20. Select 「Surface_1」 →right click 「Properties」



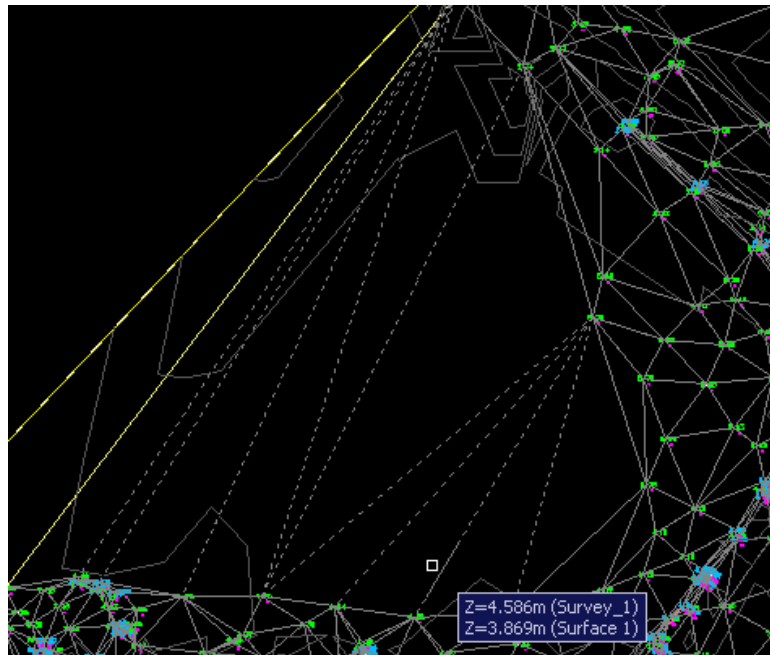
21. Select 「Surface style」, click 「_No Display」, press[OK]



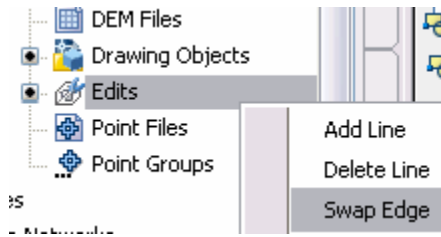
22. Expand 「Survey 1」 → Select 「Edits」 → right click 「Delete Line」



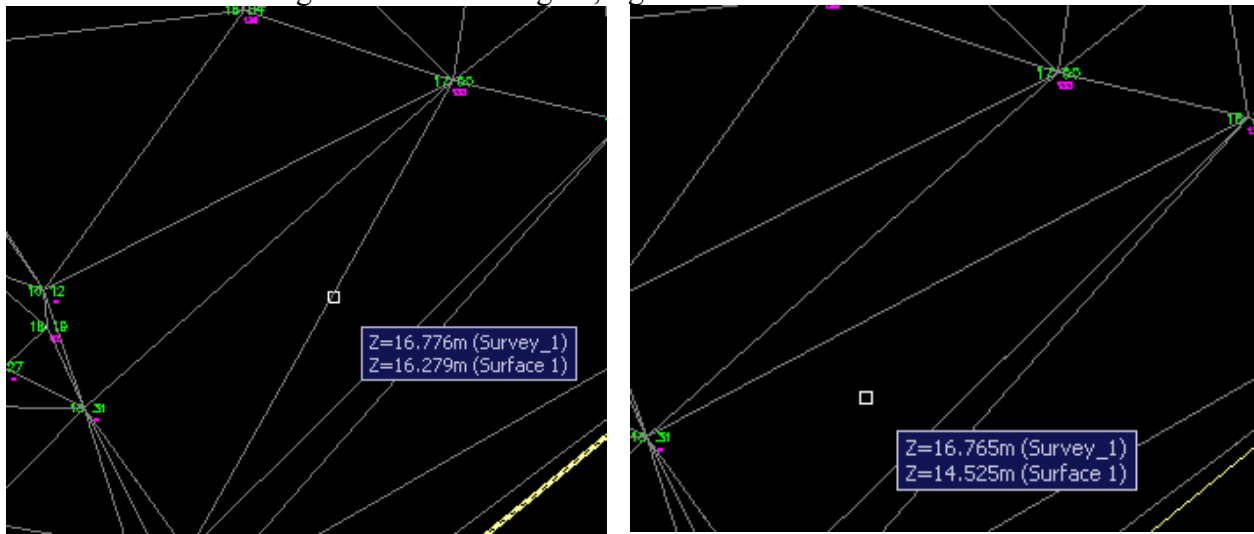
23. Select the first delete area, right click



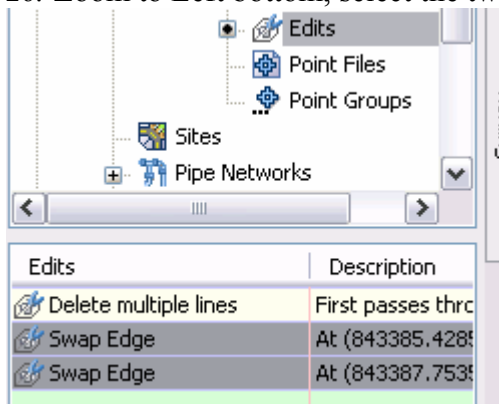
24. Select 「Edits」 →right click 「Swap Edge」



25. Select the line in right bottom to change it, right click



26. Zoom to Left bottom, select the two edit, right click delete



27. Close the drawing file. Do not save the change.