

AUTODESK® CIVIL 3D

# Dynamic 3D Computer-aided Design with Autodesk Civil 3D

Training Course for:  
Autodesk® Civil 3D™ 2007



## Lecture 5 – Supplementary Notes Create Profile by Surface and setting

August 2006

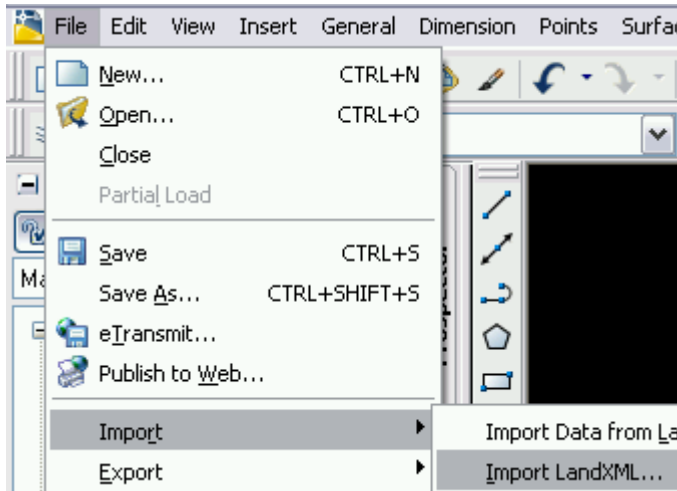
Autodesk®

## Objective

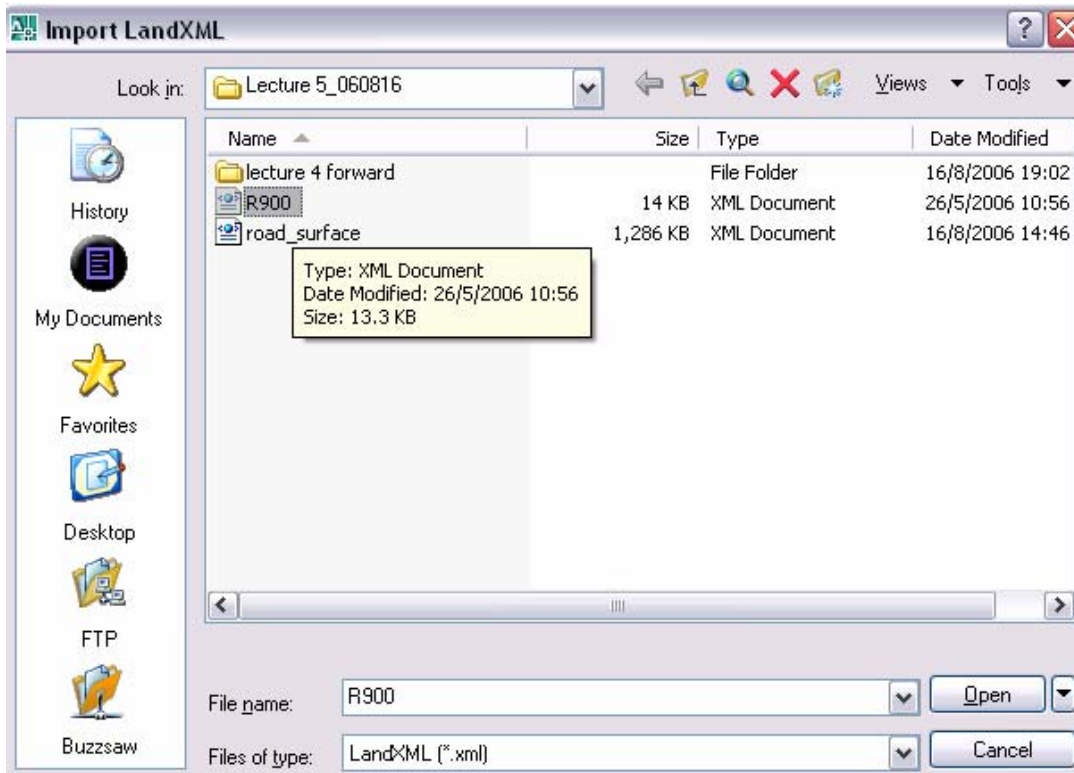
This document describes the steps to create Profile in Civil 3D.

## Exercise

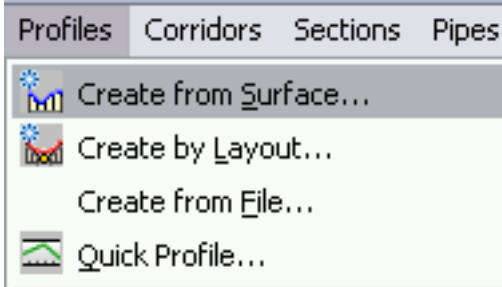
1. Create the new drawing
2. In the Toolbar menu, select the 「File」 → 「Import」 → 「Import LandXML」



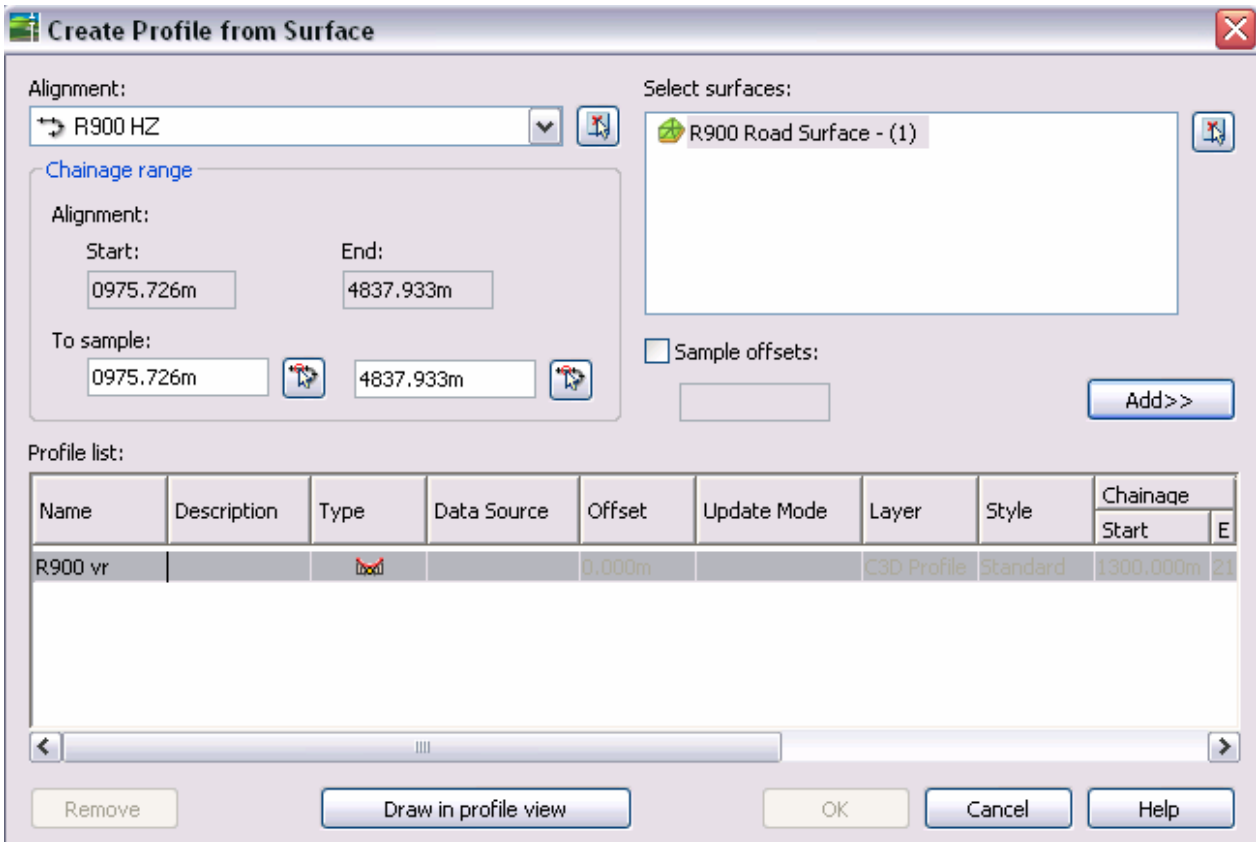
3. In the dialog box, select the [R900.xml], press [Open], click [OK]



4. Repeat the step(3), import the [road\_surface.xml]
5. In the Toolbar menu, select the 「 Profiles 」 → 「 Create from Surface 」

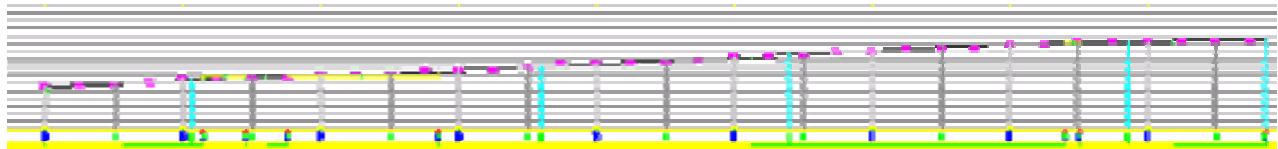
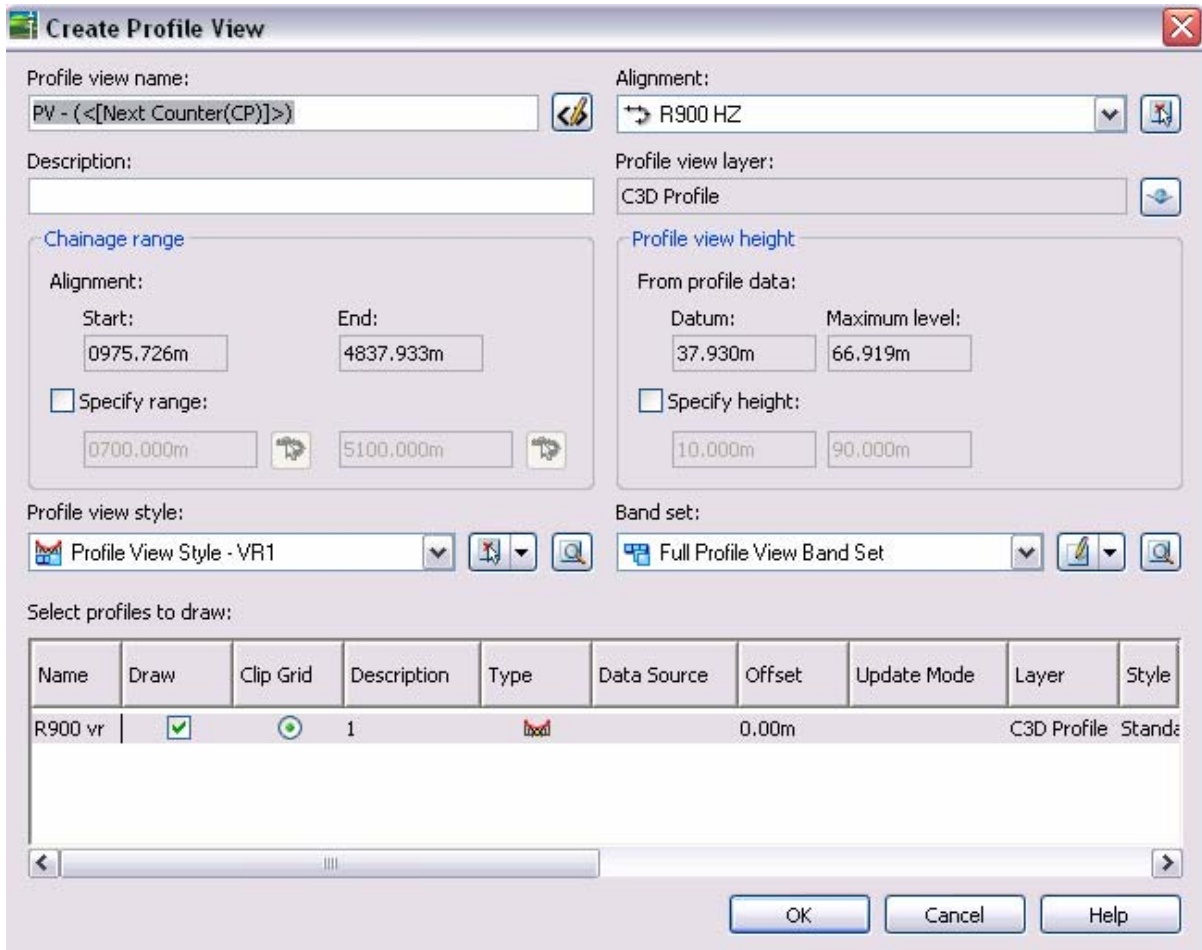


6. In the dialog box :
  - You can select the any alignment [e.g. R900HZ]
  - You can select the any surface [e.g. R900 Road Surface]
  - Can setting the start and end chainage
  - Can setting the profile sample offset
  - If setting ok, press the [Draw in profile view]

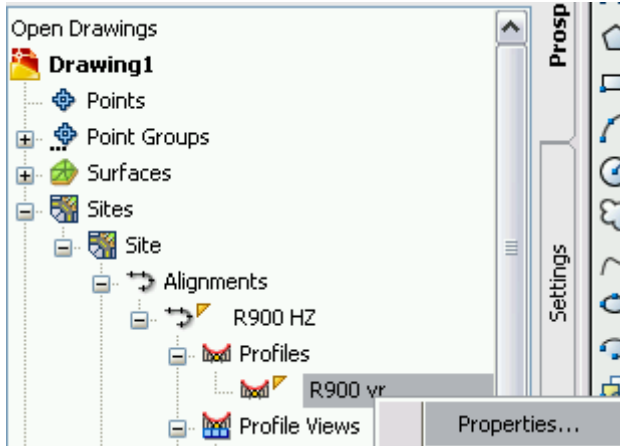




7. In the Create Profile view dialog box :

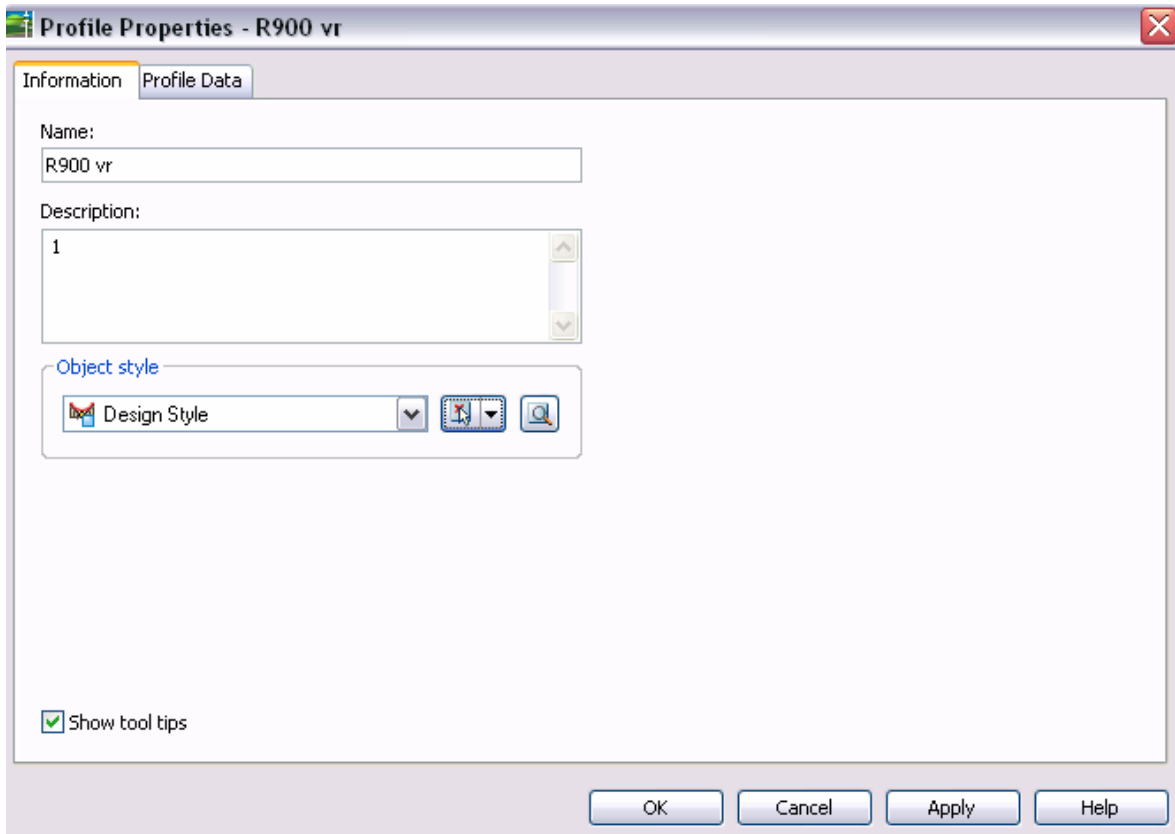
- Create the view name
- Can set the view description and layer
- Can set the view profile in the alignment chainage and view height
- Can set the view style and band set
- Press the [OK] and click the drawing space
- 



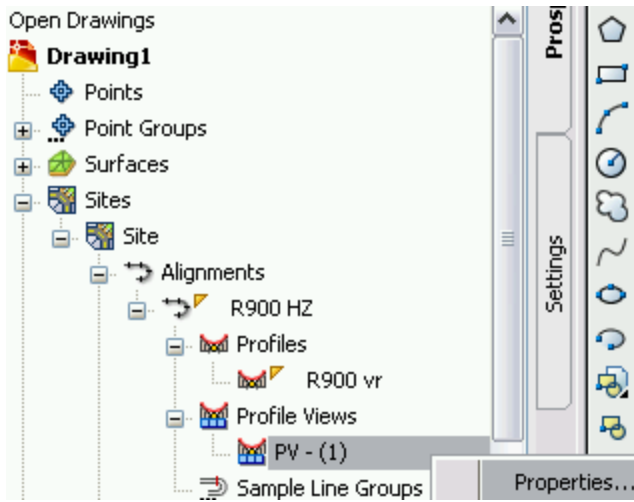
8. In the Prospector, expand 「 Site 」 → 「 Site 」 → 「 Alignment 」 → 「 R900HZ 」 → 「 Profiles 」 → 「 R900 vr 」 → right click 「 Properties 」





9. In the Profile properties dialog box :
  - click  to change the profile style
  - click  to edit the style view
  - press [cancel]

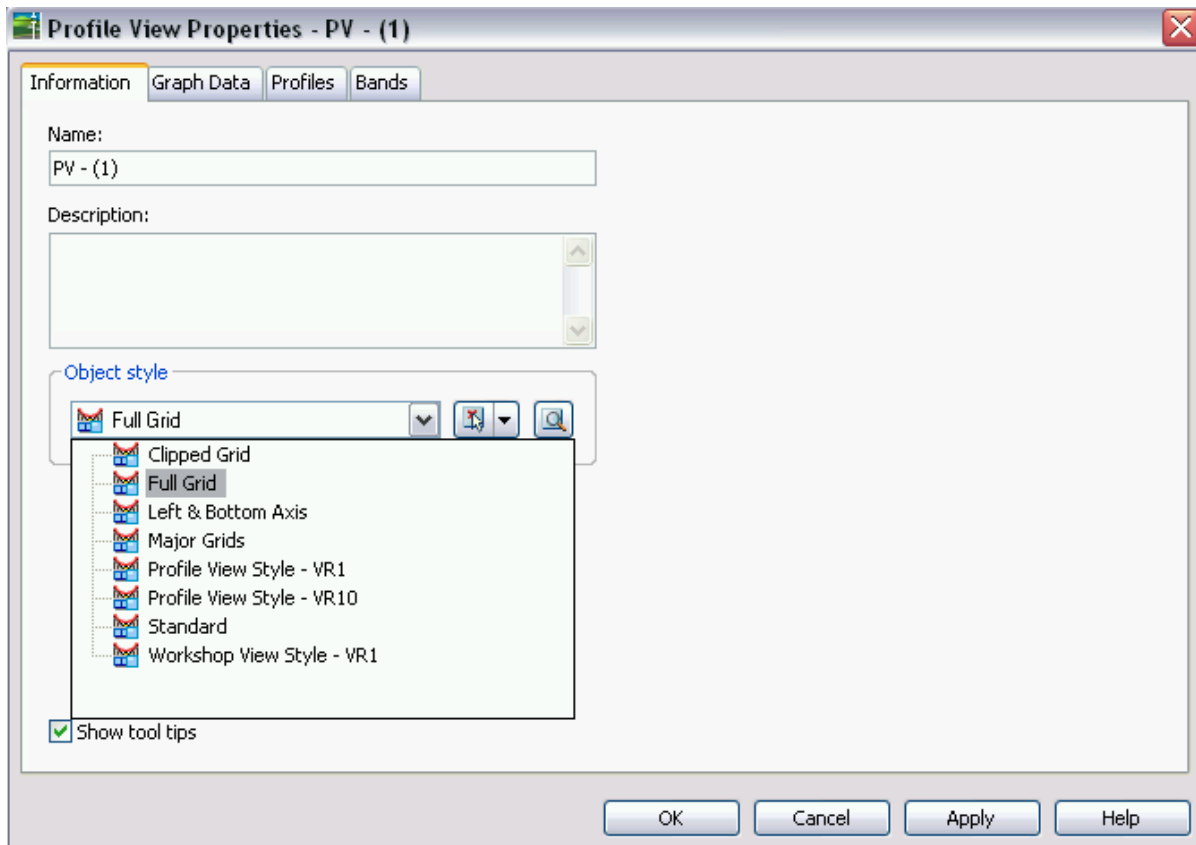


10. In the Prospector, select 「 Profile views 」 → 「 PV - (1) 」 →right click 「 Properties 」




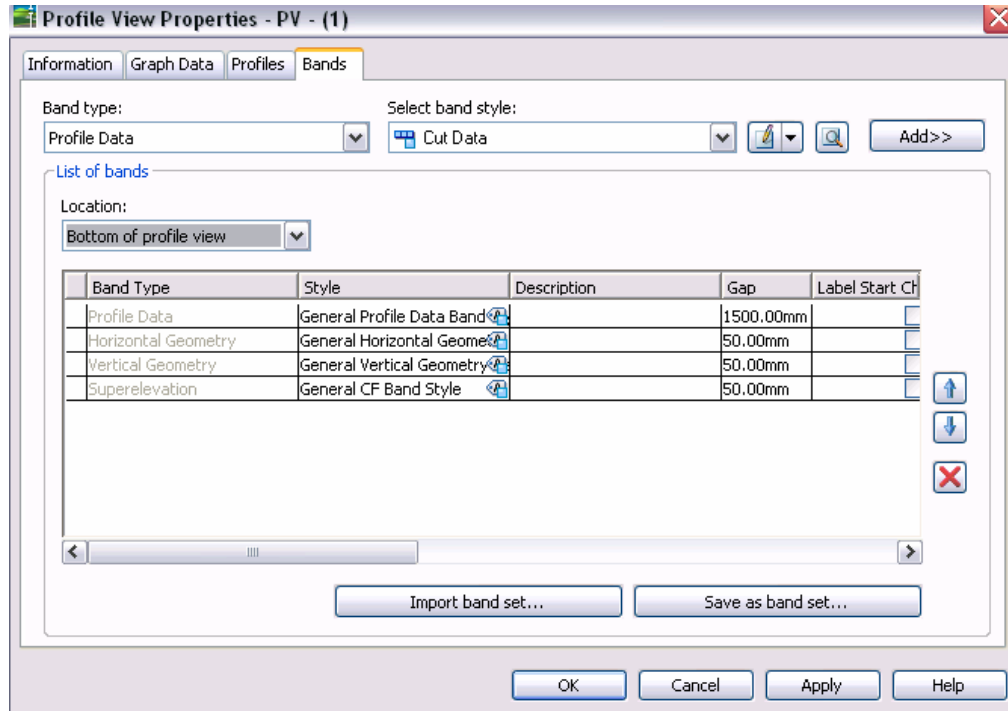
11. In the views properties dialog box :

- click  to change the view style
- click  to edit the style view
- Select Bands dialog box



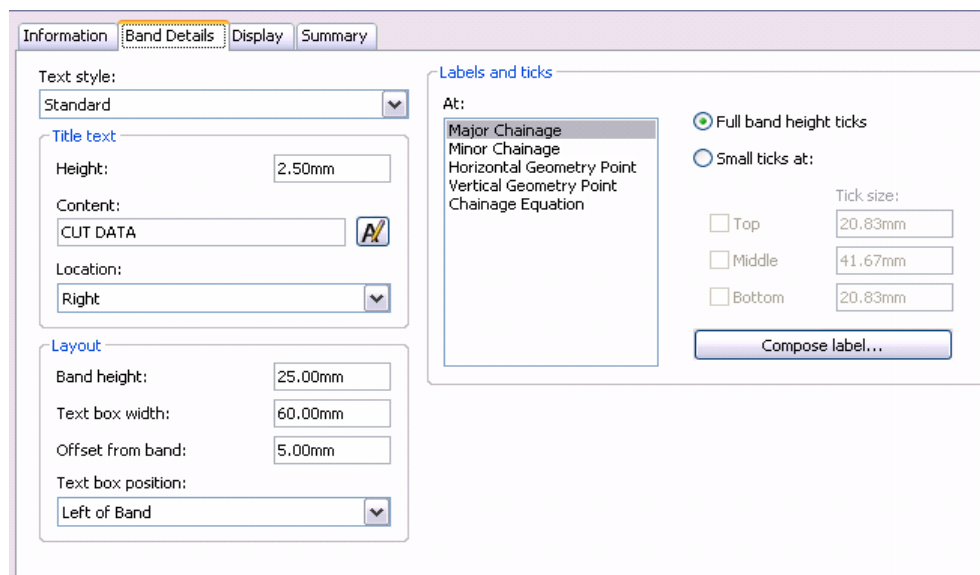
12. In the Band dialog box :

- Can set the view any band set and band style
- Add more band set to profile views
- Can import and save as the existing band set
- Click the  to edit the style



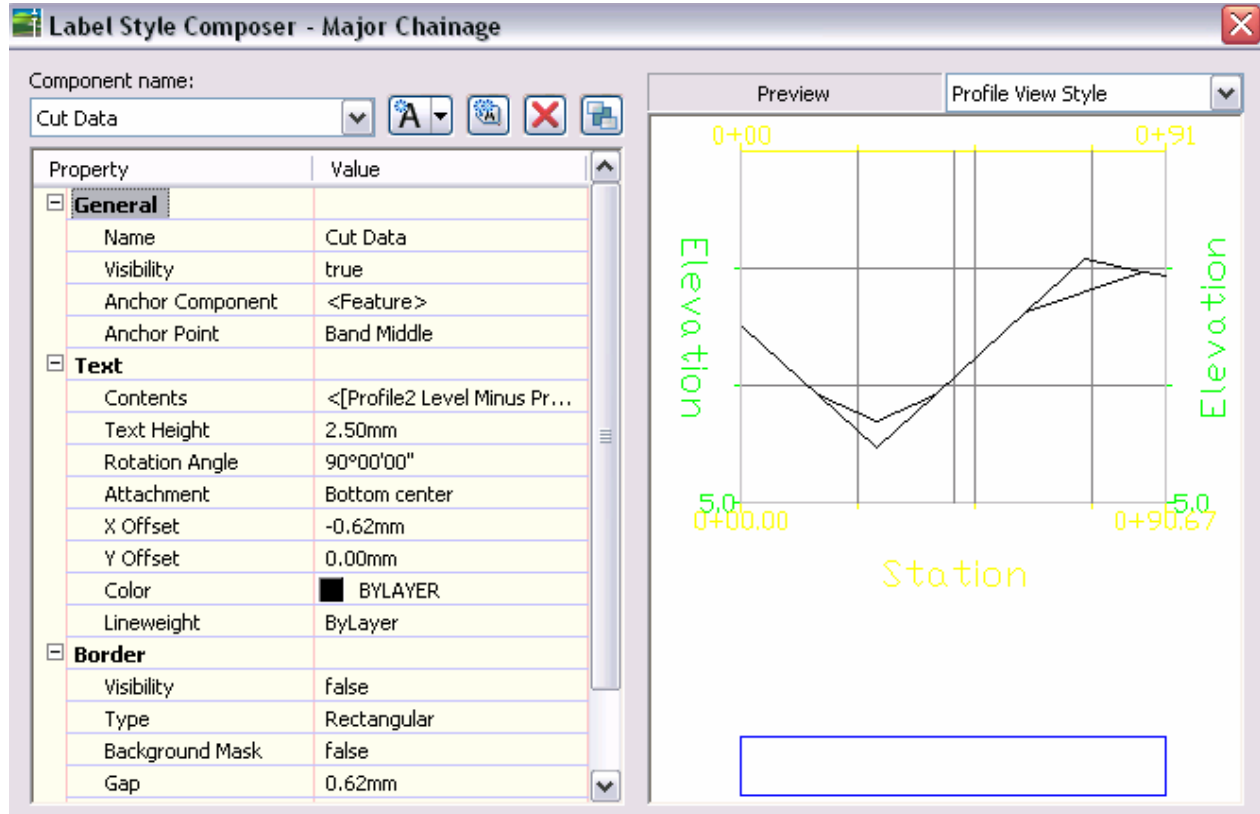
13. In the dialog box :

- Can set the band and text dimension
- Click 「Compose label」 to setting the label style



14. In the label style dialog box :

- can set the label name, offset, text dimension
- can set the label contents
- press [cancel]



15. Close the drawing file. Do not save the change