

AUTODESK® CIVIL 3D

Dynamic 3D Computer-aided Design with Autodesk Civil 3D

Training Course for:
Autodesk® Civil 3D™ 2007



Lecture 5 – Supplementary Notes Create Profile by File

August 2006

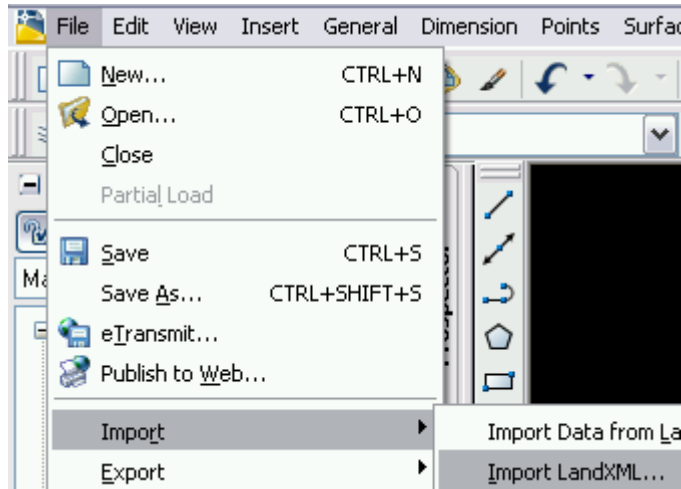
Autodesk®

Objective

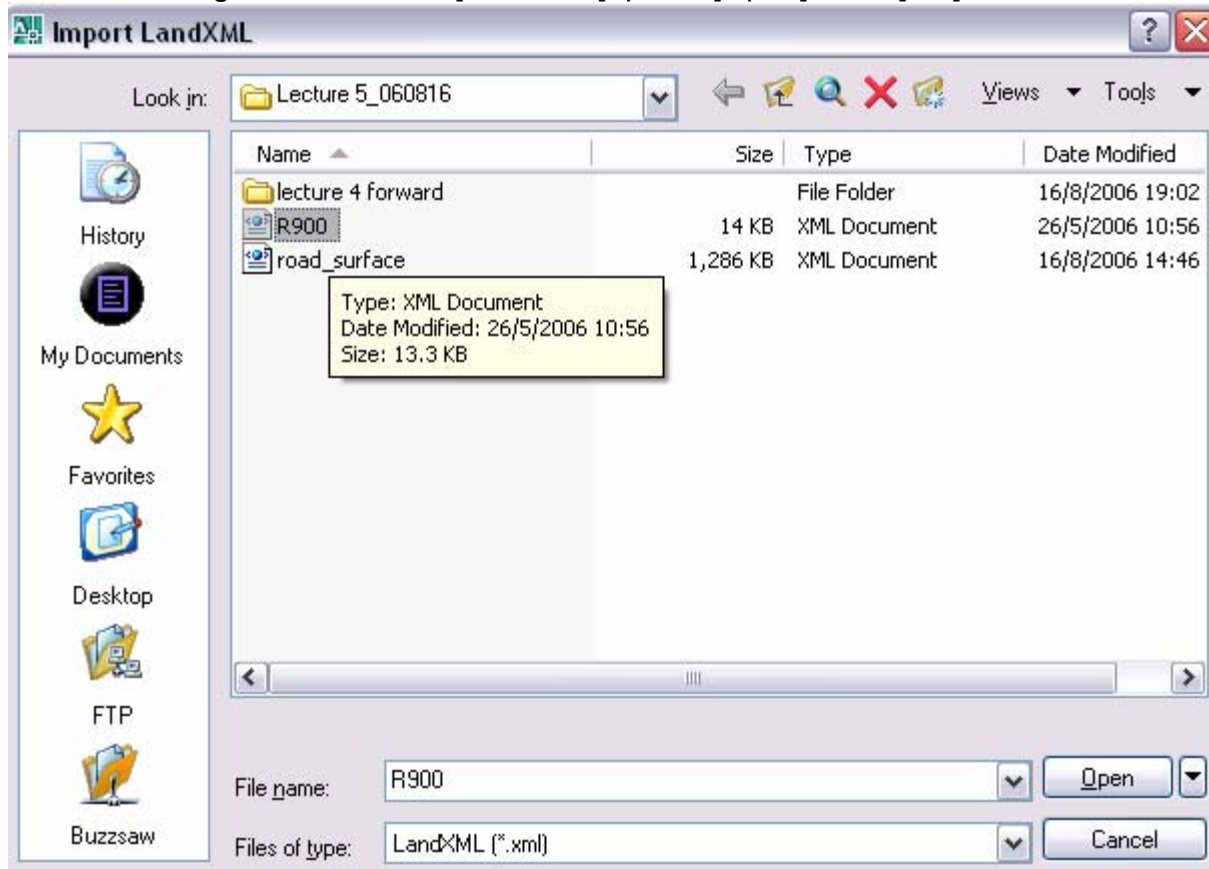
This document describes the steps to create Profile in Civil 3D.

Exercise

1. Create the new drawing
2. In the Toolbar menu, select the 「File」 → 「Import」 → 「Import LandXML」

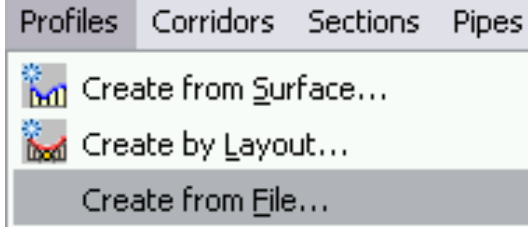


3. In the dialog box, select the [R900.xml], press [Open], click [OK]

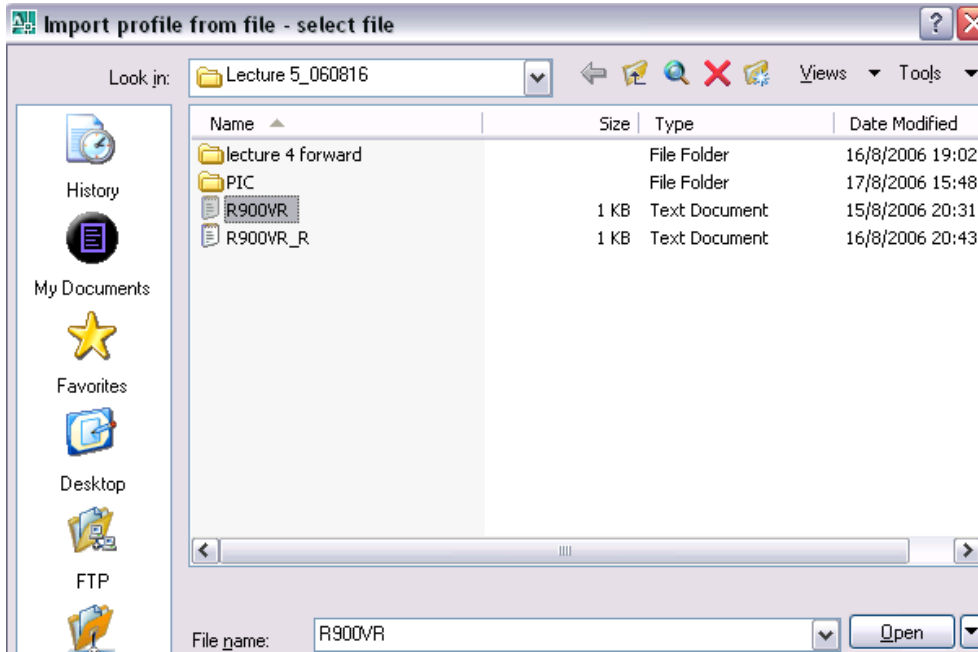


4. Repeat the step(3), import the [road_surface.xml]

5. In the Toolbar menu, select the 「Profiles」 → 「Create from File」



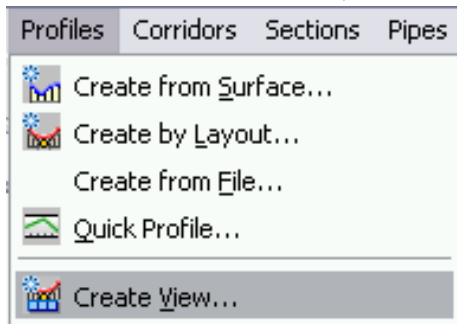
6. In the dialog box, select [R900VR], press [Open]



7. In the dialog box, enter the profile name(e.g. R900 VR), press [OK]

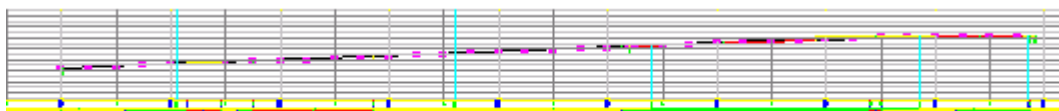
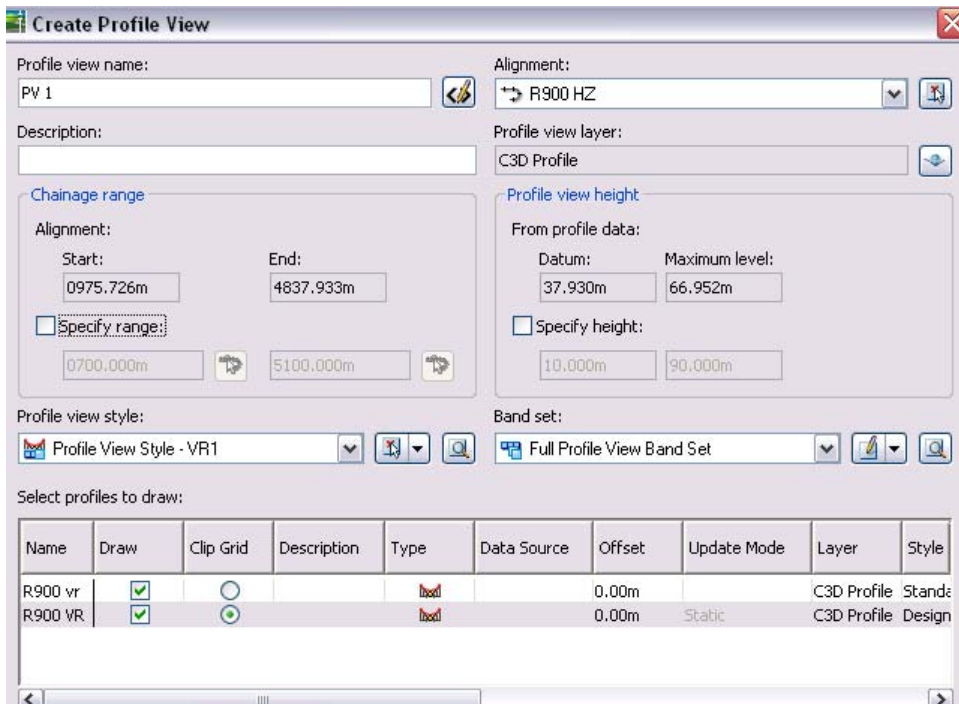


8. In the Toolbar menu, select the 「 Profile 」 → 「 Create Views 」

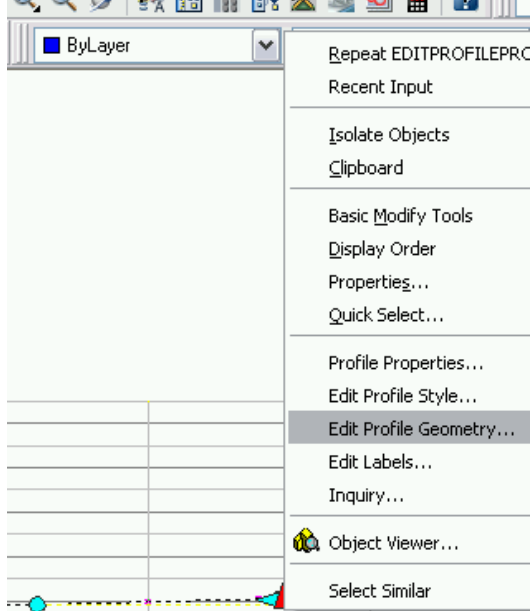


9. Enter the view name (e.g. PV 1)


- press [OK]
- select into the drawing space



10. In the profile view, select the profile →right click 「 Edit Profile Geometry 」



11. In the Profile Layout Toolbar :

- First to seven icon is create profile by hand
- Select  icon

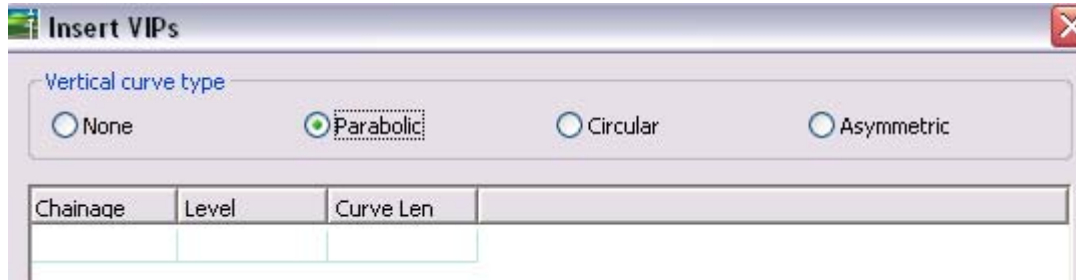


12. In dialog box, can change the K.Value; curve radius; chainage; level, close the box

| No. | Constraint1 | Constraint Type Desc | Length | Gradient | K Value | Profile Curve Radius | Profile Curve Type | High/Low Point Chainage |
|-----|-------------|----------------------|----------|----------|---------|----------------------|--------------------|-------------------------|
| 1 | Fixed | Two points | 114.465m | 3.90% | | | | |
| 2 | Free | Curve Length | 31.070m | | 20.231 | 2023.089m | Crest | 1445.535m |
| 3 | Fixed | Two points | 29.465m | 2.36% | | | | |
| 4 | Free | Curve Length | 110.000m | | 67.281 | 6728.117m | Sag | 1475.000m |
| 5 | Fixed | Two points | 455.334m | 4.00% | | | | |
| 6 | Free | Curve Length | 10.000m | | 3.003 | 300.331m | Crest | 2050.334m |
| 7 | Fixed | Two points | 135.541m | 0.67% | | | | |

13. Select the  icon to the dialog box :

- Can insert the Chainage, level, Curve Len to create profile
- Press [cancel]



14. Close the drawing file. Do not save the change