

AUTODESK® CIVIL 3D

Dynamic 3D Computer-aided Design with Autodesk Civil 3D

Training Course for:
Autodesk® Civil 3D™ 2007



Lecture 8 – Supplementary Notes Create Corridor Surface by Drawing

August 2006

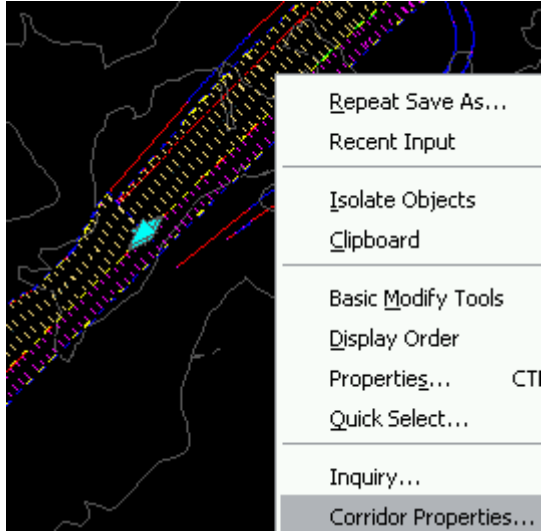
Autodesk®



Objective

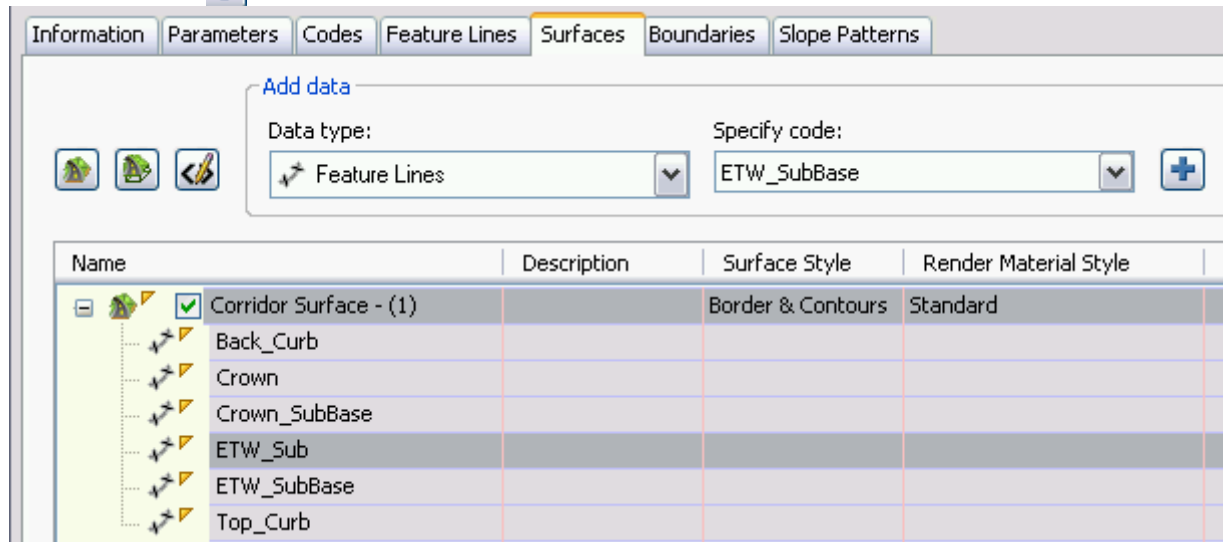
This document describes the steps to Create Corridors Surface in Civil 3D.

Exercise

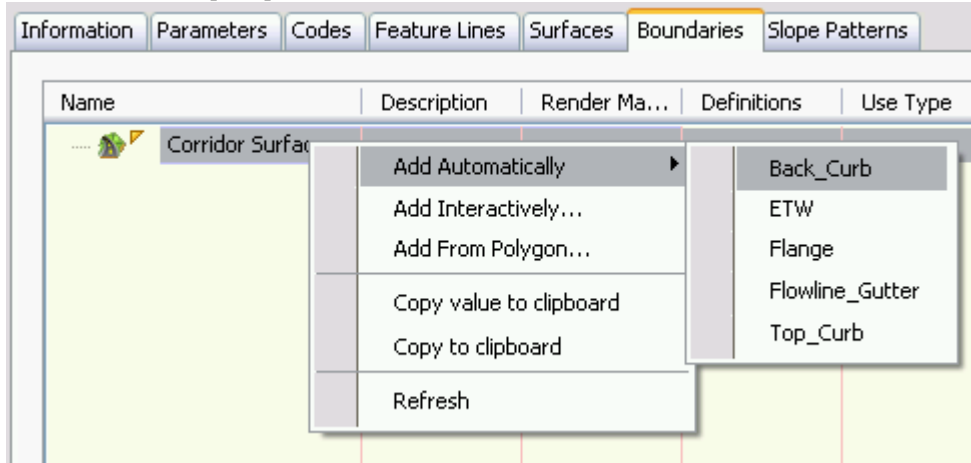
1. Open the 「Lecture 8- corridor 3.dwg」 drawing
2. Select the corridors, right click 「Corridor Properties」



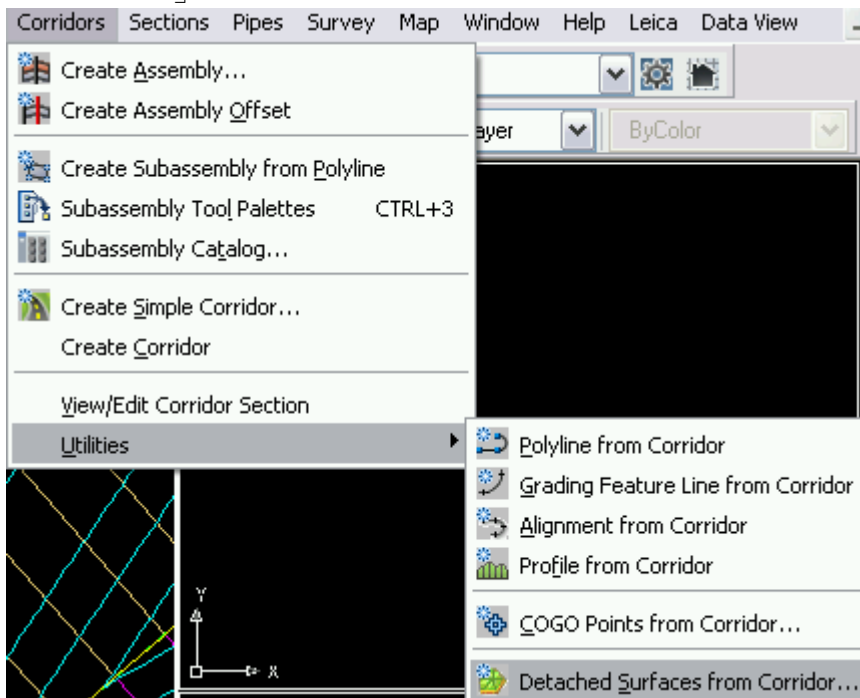
3. Select 「Surface」 type, in dialog box :
 - Click  icon create new surface
 - Add data type is feature line and specify code
 - Click  icon to add



4. Select 「Boundaries」 type, in dialog box :
 - Select the surface name, right click
 - Select the 「Add Automatically」 → 「Back_Curb」
 - You will use back curb with his surface boundary
 - Press [OK]

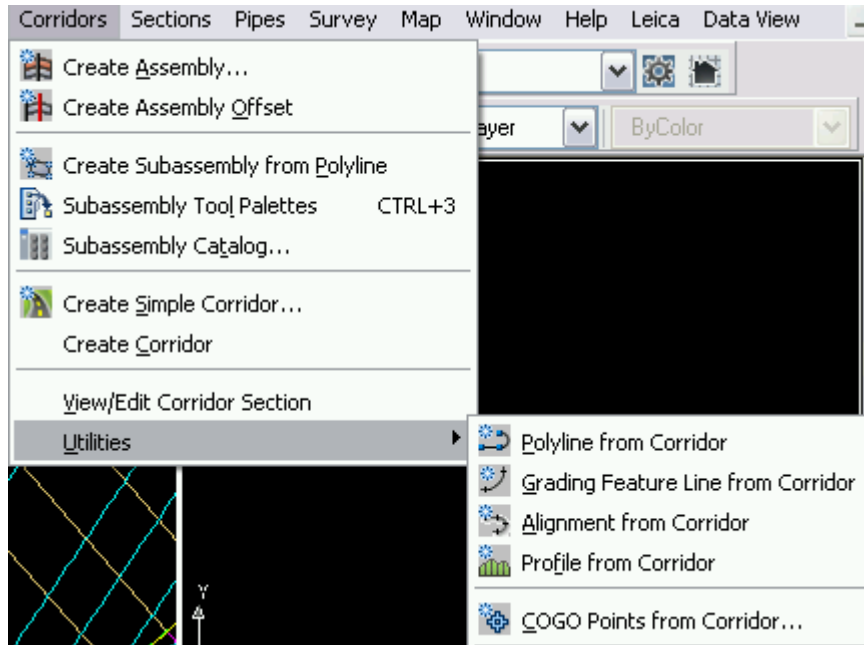


5. In the menu Toolbar, select 「Corridors」 → 「Utilities」 → 「Detached Surface form Corridor」



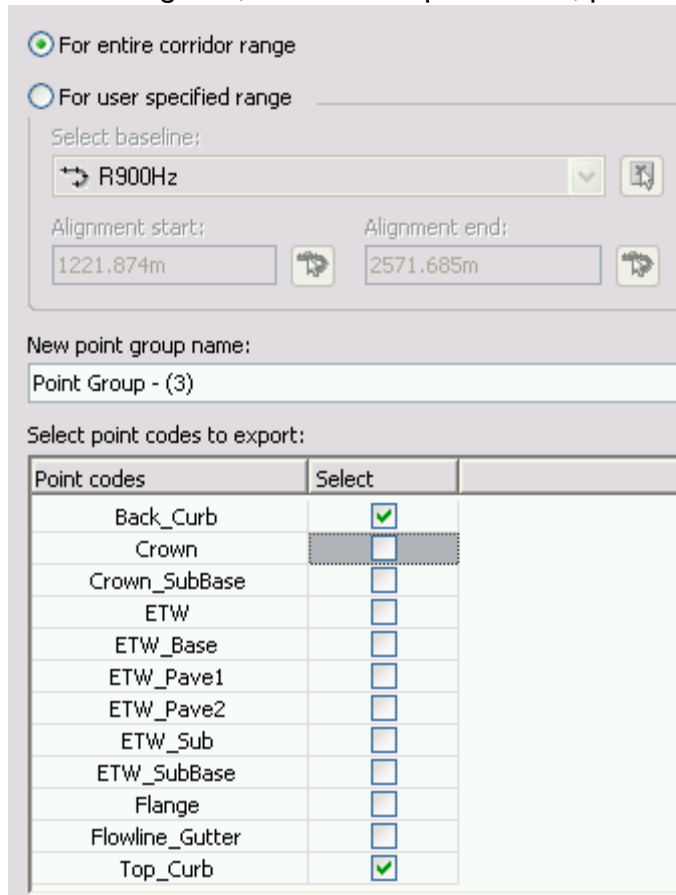
6. Select the surface and right click, you can detach the corridor with surface

7. In the menu Toolbar, select 「Corridors」 → 「Utilities」 → 「COGO Point form Corridor」



8. Select the corridor

9. In dialog box, click on the point code, press [OK]



10. open the point group to show the point

Point Number ▲	Easting	Northing	Point Level	Name	Raw Descr..
1057	833242.8552m	823017.5482m	67.115m		Back_Curb
1058	833245.9428m	823020.1523m	67.138m		Back_Curb
1059	833246.2242m	823020.3879m	67.140m		Back_Curb
1060	833246.2265m	823020.3899m	67.140m		Back_Curb
1061	833249.7056m	823023.2806m	67.150m		Back_Curb
1062	833250.3666m	823023.8250m	67.150m		Back_Curb
1063	833250.3674m	823023.8256m	67.150m		Back_Curb
1064	833253.4927m	823026.3794m	0.198m		Back_Curb
1065	833257.3040m	823029.4484m	0.198m		Back_Curb
1066	832981.9164m	822826.8447m	58.152m		Top_Curb
1067	832987.9078m	822827.8735m	58.422m		Top_Curb
1068	832991.4168m	822831.4365m	58.620m		Top_Curb
1069	832994.9258m	822834.9995m	58.819m		Top_Curb
1070	832998.4347m	822838.5626m	59.017m		Top_Curb
1071	833001.9437m	822842.1256m	59.216m		Top_Curb
1072	833005.4527m	822845.6887m	59.414m		Top_Curb
1073	833008.9616m	822849.2517m	59.613m		Top_Curb

11. Close the drawing file. Do not save the change